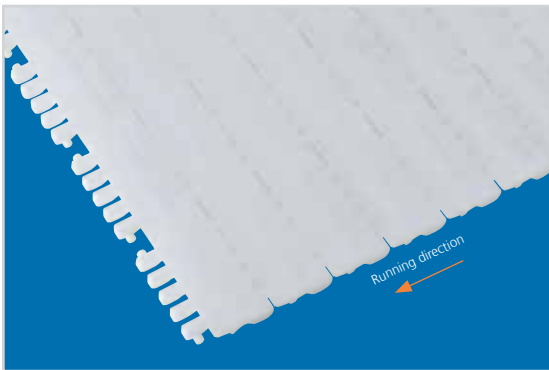


# Plastic Modular Belt

## uni ECB

Same sprockets and drum motors as uni MPB



### General information

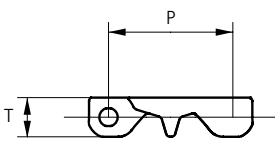
#### Straight running

- Surface type: Closed
- Surface opening: 0%
- Backflex radius: 65.0 mm (2.60 in)

#### Main market segment

- Meat/cutting line

### Dimensional Sketches



### Dimensions

	mm	in
<b>P</b>	50.8	2.00
<b>T</b>	16.0	0.63

Standard belt material	Standard belt colors	Standard pins
POM-SI	<b>W</b>	-

All materials are FDA approved for use with food contact. Material temperature range: -40 to +90°C (-40 to +194°F).

POM-SI **B** is available as MTO and can be used as marker in belt.

Please note that uni ECB in POM-SI blue is not according to the standard color quality for blue. Small variations may occur.

Width		Belt weight		Max belt pull		No. of sprockets
		POM-SI		POM-SI		
mm	in	kg/m	lb/ft	N	lb	
402	15.83	5.00	3.36	4400	990	3
452	17.80	6.60	3.76	5500	1238	5
502	19.76	6.20	4.17	5500	1238	4
603	23.70	7.50	5.04	6600	1485	5
754	29.65	9.30	6.25	7700	1733	7
806	31.73	10.00	6.72	8800	1980	7

Available standard belt widths. Non standard widths are not available.

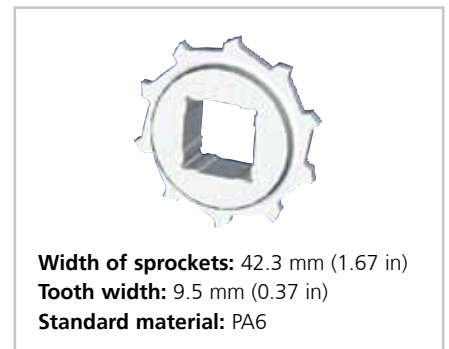
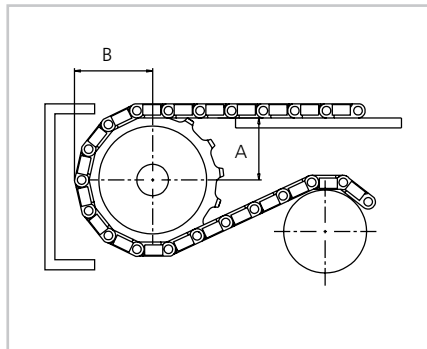
## Standard Sprockets

No. of teeth	Pitch diameter		Overall diameter		Hub diameter		Bore	
	mm	in	mm	in	mm	in	mm	in
8	132.8	5.23	132.9	5.23	65.0	2.56	ø18.0/40.0*	ø0.71/1.57*
							sq 38.1	sq 1.50
					sq 40.0	sq 1.57		
10	164.4	6.47	166.3	6.55	65.0	2.56	ø18.0/40.0*	ø0.71/1.57*
							sq 38.1	sq 1.50
							sq 40.0	sq 1.57
					120.0	4.72	ø40.0/70.0*	ø1.57/2.76*
							sq 50.8	sq 2.00
							sq 63.0	sq 2.50
12	196.3	7.73	198.6	7.82	65.0	2.56	ø18.0/40.0*	ø0.71/1.57*
							sq 38.1	sq 1.50
							sq 40.0	sq 1.57
					120.0	4.72	ø40.0/70.0*	ø1.57/2.76*
							sq 50.8	sq 2.00
							sq 60.0	sq 2.36
16	260.4	10.25	263.8	10.04	65.0	2.56	ø18.0/40.0*	ø0.71/1.57*
							ø40.0/70.0*	ø1.57/2.76*
					150.0	5.91		

\* Minimum/maximum round bore. Same sprockets and drum motors as uni MPB.

## Placement of Wearstrips and Sprockets

No. of teeth	Minimum B-dimension		Wearstrip distance A	
	mm	in	mm	in
8	76.8	3.02	53.6	2.11
10	92.8	3.56	70.5	2.78
12	108.8	4.28	87.2	3.43
16	141.1	5.56	120.2	4.73



Other sprocket are available upon request. Two-part sprockets are available upon request.  
 Please note, if travel is in both directions, an extra set of sprockets is required. Alternatively use bi-directional options.